

Rowde Village Hall



Erected 1887. In Memory
Andrew Beauchamp Starky
Reg. Charity No 262,095 A/1

Rowde Village hall





Rear Hall



Main Hall



Annexe

Village Hall Particulars

Accommodation

Main Hall

The main hall is 36 ft x 18ft. with an adjacent annexe. The main Hall is fitted with a public address system. It also has an induction loop system for those who may have hearing difficulties. The annexe can be used to serve refreshments, or as a sitting out area. It can provide a committee meeting area or an area for use by small discussion groups.

Small Hall

The small hall is 30ft. X 12 ft. and is suitable for smaller groups, discussion groups or committee meetings.

Kitchen

The kitchen is suitable for preparing light refreshments.

Toilets

In addition to the ladies' and gents' toilets a disabled toilet is provided. The disabled toilet has an emergency call system. Baby changing facilities are also provided in the disabled toilet.

Car park

The car park will accommodate approximately eighteen cars.

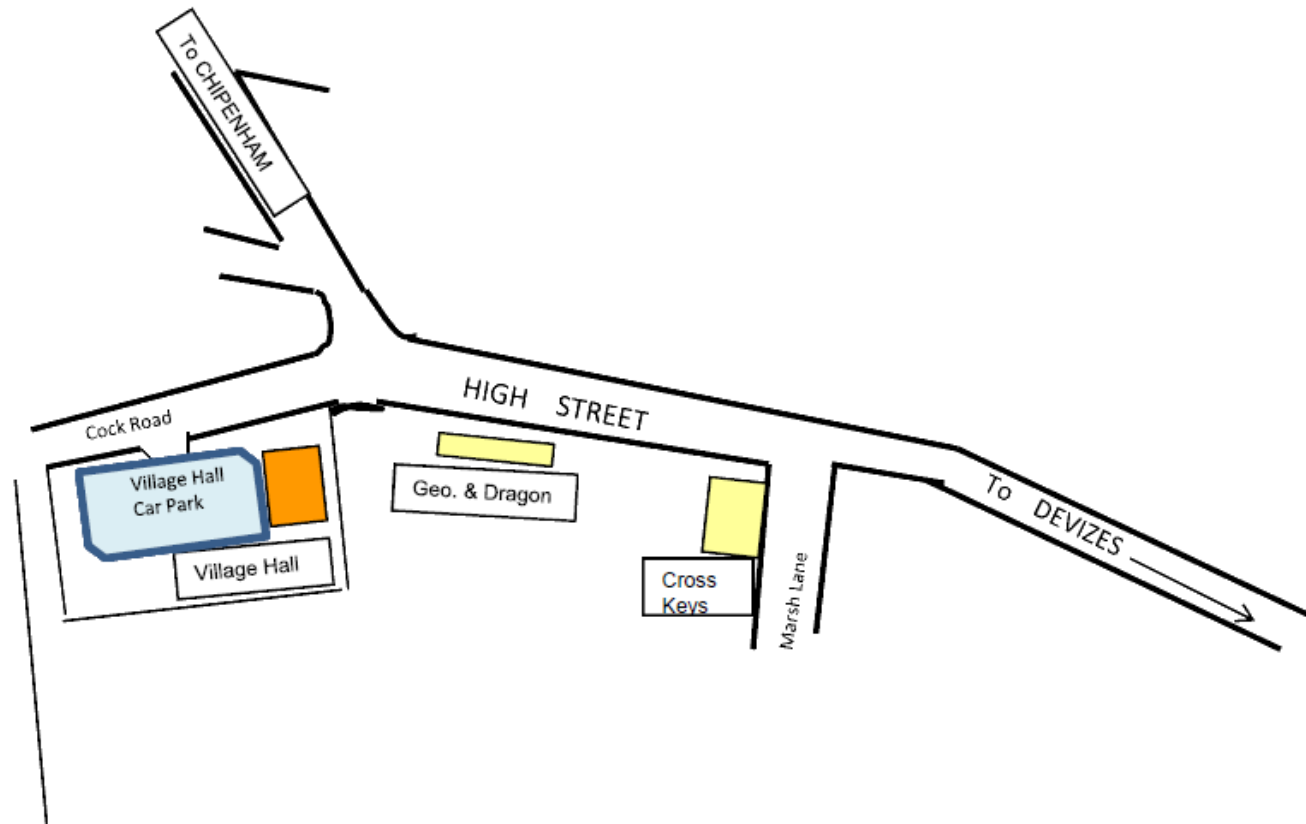
Wheelchair access/exits are provided into the main building directly from the car park and also at the rear entrance to the small hall. Both entrances enable subsequent access to all parts of the building. If required, a wheelchair is available to provide assistance in moving from the car park to the main building.

Enquiries and Bookings

The hall is available for hire for those groups/organisations/clubs that wish to use the hall on a regular basis, or for private functions. For further information contact :

Enquiries: 07811 716317 **Bookings:** 01380 722497 (after 6pm).

Where to find us



A short history of the Village Hall

(formerly known as the Rowde Reading Room and Coffee Tavern)

The land was originally purchased from the Locke family in 1864 by Charlotte Starky. In 1872 the ownership of the parcel of land on which the village hall now stands passed to Charlotte's eldest son, John Baynton Starky and, on his death in 1872, to his widow Frances Anne Starky.

The Rowde Reading Room and Coffee Tavern was erected in 1887 by Charlotte Starky in memory of her second son, Andrew Beauchamp Starky. Andrew had become vicar of St.Mathew's Church, Rowde in 1864 and died, only aged 33, in 1871. Charlotte and Frances (widow of Andrew's elder brother) then conveyed the buildings and the land on which they stood to trustees to be for ever used as a Reading Room and Coffee Tavern for the use of the residents of Rowde.

The three original trustees were: the Rev.Shipley Harris (vicar of Rowde); John Wheeler of Foxhangers Farm, Rowde (a farmer); and, John Dark Lewis of Iron Pear Tree Farm, Rowde (also a farmer).

Early in the 1970s, the three trustees wanted to retire from their roles and applied to the Charity Commissioners to raise a new scheme to appoint new trustees and vest the charity with the Official Custodian for Charities. In 1976 the new scheme to appoint trustees (now referred to as Members) came into being. Individual members are now elected annually or nominated by user groups to the management committee. Their remit is to continue to provide a meeting place, within the requirements of the original bequest and the charity laws, for the use of Rowde residents. The hall is a 'Permanently Endowed Charitable Trust' and is an independent organisation. It does not receive any regular funding from local or central government but relies on income from lettings and fund raising activities. The hall owes its success to the strength and commitment of local volunteers and Supporters.

Safety and Advice to Hirers

All emergency exit routes and doors are fitted with permanently maintained exit signs

All rooms, toilets, passages, kitchen, and outside emergency exits have emergency lighting installed.

A fire alarm system is fitted with call buttons and detectors situated throughout the building.

Fire extinguishers are installed in various locations as advised to meet requirements

All the above are inspected regularly.

Gas and electrical equipment and installations are inspected regularly by approved contractors.

ALL REGULAR USERS AND PRIVATE USERS OF THE HALL MUST ABIDE BY THE FIRE SAFETY REGULATIONS

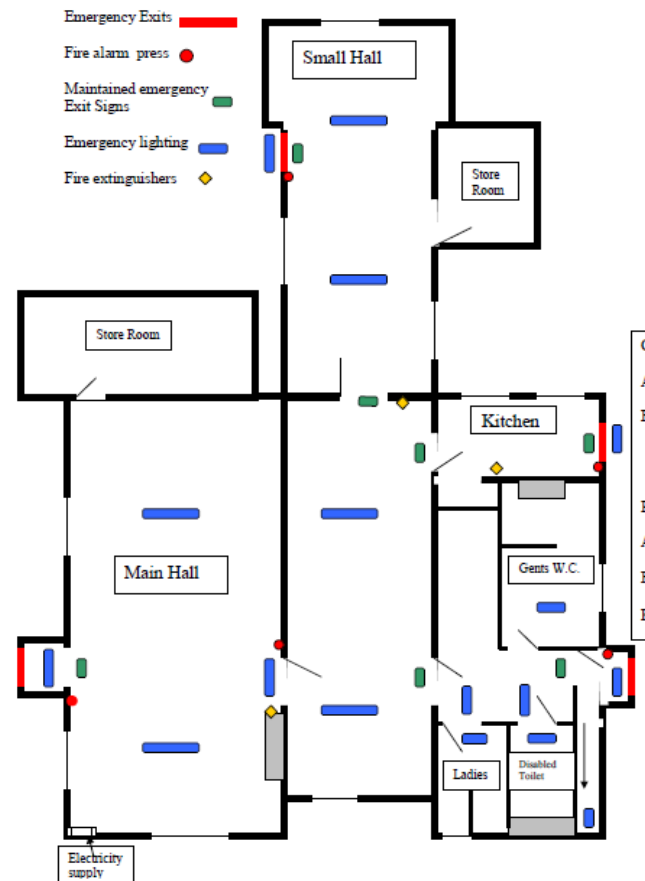
A hirer will be required to appoint a responsible person to take responsibility at a meeting/event for fire safety. The responsible person will be given assistance to ensure that he/she is familiar with the building, alarm systems, and other fire equipment. All private bookings are given instruction and plan of the building on entry in to premises.

Smoking is not allowed in any of the rooms in the village hall.

It is the responsibility of hirers to obtain any drinks and music licences necessary to cover their events and to seek adequate insurance for their activities.

Hall Plan and Safety Information

PLAN of EMERGENCY EXITS & EQUIPMENT



Hall Activities



